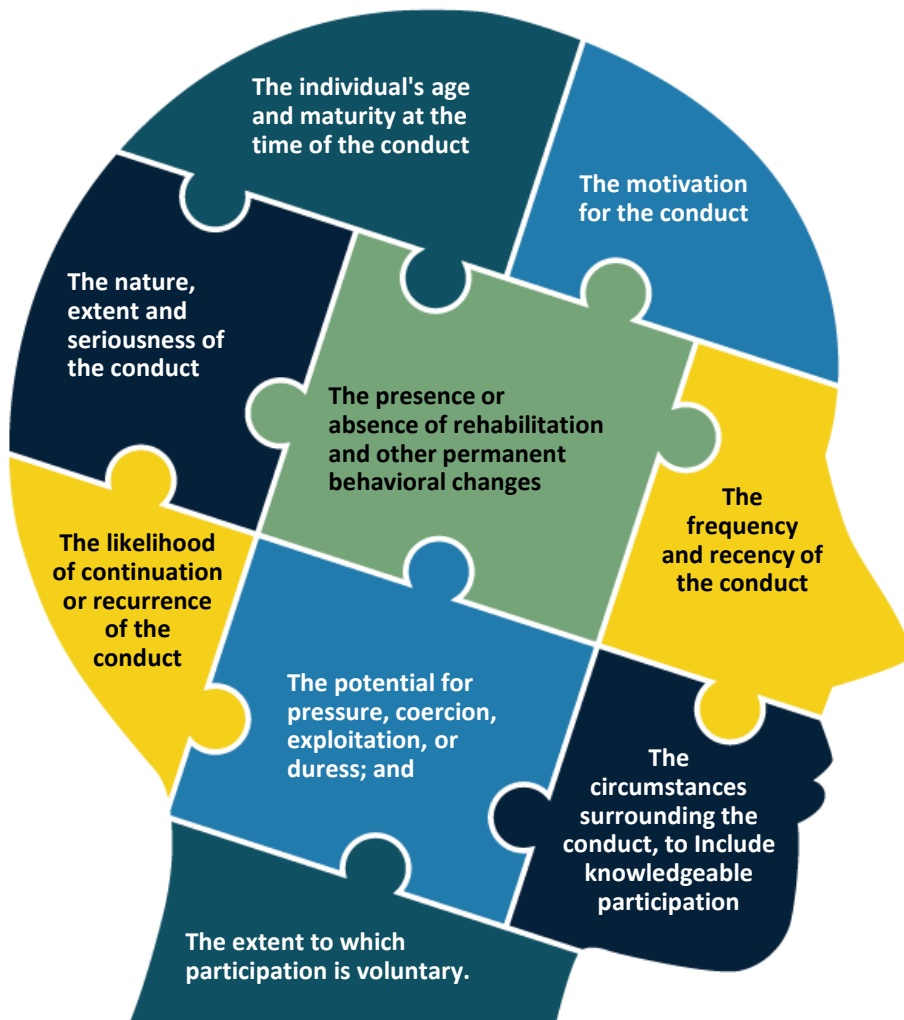


Adjudication is an evaluation of the “whole person.” This means applying the appropriate adjudicative guidelines (e.g., National Security, Civilian Suitability, Credentialing and/or Child Care Fitness).

# ADJUDICATIONS

## The Whole Person Concept



### The Adjudicative Process

The adjudicative process is an examination of a sufficient period and a careful weighing of a number of variables of an individual's life to make an affirmative determination that the individual is an acceptable security risk. This is known as the whole-person concept. All available, reliable information about the person, past and present, favorable and unfavorable, is considered in reaching a national security eligibility determination.

### Security Executive Agent Directive (SEAD) 4, National Security Adjudicative Guidelines, Effective 08 June 2017

SEAD 4 establishes the single, common adjudicative criteria for all covered individuals who require initial or continued eligibility for access to classified information or eligibility to hold a sensitive position. The Guidelines reflected in SEAD 4, effective 08 June 2017 supersede all previously issued national security adjudicative criteria or guidelines.

